

BRAUM

INSTALLATION GUIDE

2015+ FORD MUSTANG HARNESS BAR (BRHB-53)

RECOMMENDED TOOLS

T50 Torque
6MM Allen Key
Flat Head or Pry Bar
Torque Wrench

This harness bar is sold without warranty expressed or implied. No warranty or representation is made as to this product's ability to protect the user from possible injury or even death. The effectiveness, warranty and longevity of this equipment are directly related to the manner in which it is installed, used, and/or maintained. **THE USER ASSUMES ALL RISK.**

To start, lift the rear seat cushion from the bottom held on by two clips.



Remove the child seat anchors from both sides but keep the bolts as you will be re-using those later.



Attach the shortest support bar to the inner bolt but do not tighten down the bolt all the way yet so you can adjust it again later. Make sure the groove is facing upwards. There's no difference between each side of the support bar.



(Optional)

Once you attached both sides you can put back on the rear seat cushion feeding it through the anker holes.



Remove the bottom bolt of the OEM 3 Point harness near the rear door panel.

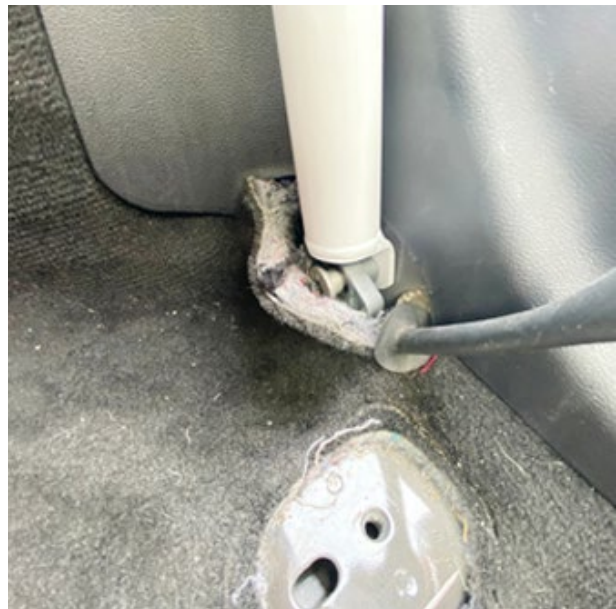


Grab the medium length side support bar. To determine which side is which, the bottom bracket should be facing toward the wall and the groove should be facing toward the front of the car. (see photo)



(Photos shows the driver side)

Once you figured out which side is which, carefully pry the bottom bracket with a flathead or pry tool and slide the tab between the frame and bracket and thread the bolt loosely. Repeat on the other side.





Once the side support bars are attached to the vehicle, you can now attach the main bar to the side support arms. It should look like the image above. Do not tighten the bolts down until both side bars are attached. Once attached you can tighten them down.



Next, line up the center support bars and tighten with those two bolts.



Once the main bar is attached to the center and side support bars you can now tighten down all the bolts. You can reach the center bolt mounts through the seat cushion to tighten it down to torque specs. Do the same for the side support bar bolt.





(optional)

You can now attach the seat belt guide clamps to the spots you plan on placing the harnesses to prevent the harnesses from sliding.

If you have any installation questions, please contact us at 213-550-3295 or info@braumracing.com